

SHEETS FOR CASTLES

Solid bases for your work.
A true fact.



VIGA
TREFILADOS

VILLACERO | ALAMBRES

SHEETS FOR CASTLES

Solid bases for your work.
A true fact.

DESCRIPTION

Sheets for castles are a structural element used to reinforce concrete elements confining walls of masonry, bond beams and columns.

They are manufactured with three or four rods (wires), forming, depending upon the design, triangular, square or rectangular sections, with perpendicular plain or corrugated braces electro-welded to the longitudinal reinforcement.

To manufacture this product, the highest technology is utilized, as well as international quality wire rod as raw material, which is then cold rolled, therefore offering a greater tension resistance.

PRESENTATION

- In Sheets: Lengths of 6 m. (packages of 50 sheets). Widths vary depending upon the product's design.
- Sheets for castles with short ends on the braces on both sides, and in all of the designs.
- Support with bending machines offered to our distributors.

MECHANICAL PROPERTIES

- Tension resistance 57 kgf/mm² minimum
- Fluency limit 50 kgf/mm² minimum
- Resistance to a cutting effort: 15 kgf/mm² minimum
- Elongation (ductility): elongation at rupture in 10 diameters. Minimum 6%

NORMS

Excellent compliance with quality norms: NOM-B-253, NOM-B-456, ASTM-A-82, ASTM-A-496.

APPLICATIONS

- Construction sector: Houses, offices, warehouses, walls, fences, etc.
- Poles
- Highway distance markers
- Foundation beam cages
- Vertical castles in corners and wall terminations
- Bond beams or horizontal tie closures

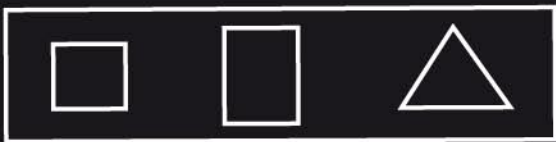
CASTLE SHEET SPECIFICATIONS

PRODUCT	LONGITUDINAL BAR DIAMETER	BRACE	CASTLE SECTION	CONCRETE SECTION	SEPARATION BETWEEN BRACES	PIECES PER SHEET
	mm	mm	cm	cm	mm	
10 x 10 - 4	5.39(CAL. 4.75)	4.11(CAL. 8)	6 x 6	10 x 10	158	3
10 x 20 - 4	5.39(CAL. 4.75)	4.11(CAL. 8)	6 x 16	10 x 20	158	2
12 x 12 - 4	5.39(CAL. 4.75)	4.11(CAL. 8)	8 x 8	12 x 12	158	3 y 6
12 x 20 - 4	5.39(CAL. 4.75)	4.11(CAL. 8)	8 x 16	12 x 20	158	4
15 x 15 - 4	5.39(CAL. 4.75)	4.11(CAL. 8)	11 x 11	15 x 15	158	5
15 x 20 - 4	5.39(CAL. 4.75)	4.11(CAL. 8)	11 x 16	15 x 20	158	4
15 x 25 - 4	5.39(CAL. 4.75)	4.11(CAL. 8)	11 x 21	15 x 25	158	2 y 3
15 x 30 - 4	5.39(CAL. 4.75)	4.11(CAL. 8)	11 x 26	15 x 30	158	3
10 x 10 - 3	5.39(CAL. 4.75)	4.11(CAL. 8)	6 x 6	10 x 10	158	4
12 x 12 - 3	5.39(CAL. 4.75)	4.11(CAL. 8)	8 x 8	12 x 12	158	
15 x 15 - 3	5.39(CAL. 4.75)	4.11(CAL. 8)	11 x 11	15 x 15	158	3 y 6

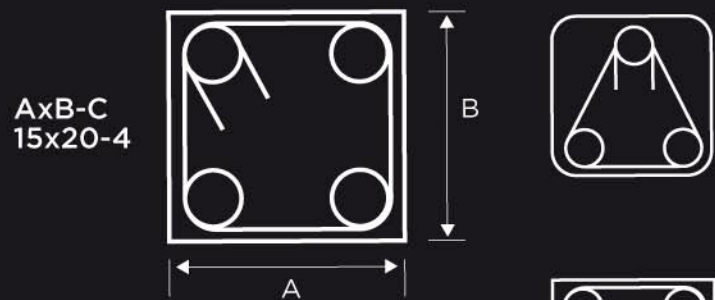
REINFORCED CASTLE SHEET SPECIFICATIONS

PRODUCT	LONGITUDINAL BAR DIAMETER	BRACE	CASTLE SECTION	CONCRETE SECTION	SEPARATION BETWEEN BRACES	PIECES PER SHEET
	mm	mm	cm	cm	mm	
15 x 15 -4	8.5	4.88 (Cal.6)	11 x11	15 x 15	200	4
15 x 15 -4	7.9	4.88 (Cal.6)	11 x11	15 x 15	200	4
15 x 20 -4	8.5	4.88 (Cal.6)	11 x16	15 x 20	200	4
15 x 20 -4	7.9	4.88 (Cal.6)	11 x16	15 x 20	200	4

ELECTROWELDED TYPES OF CASTLES



NOMENCLATURE



REALIZATION OF OVERLAPS

Overlaps can be made in a fast and secure manner as shown in the following figure



A x B = Concrete section of column or lock in centimeters.
C = Number of longitudinal wires.





SALES REPRESENTATIVES
THROUGHOUT THE MEXICAN REPUBLIC

T (81) 8989 8989
ventas@villacero.com
WWW.VILLACERO.COM

MONTERREY, N.L.
TORRE VILLACERO
AVE. OCAMPO 250 PTE
ZONA CENTRO C.P. 64000
T (81) 8989 8989
F (81) 8989 8988

MÉXICO, D.F.
PONIENTE 128 NO. 672
FRACC. INDUSTRIAL VALLEJO
C.P. 02300
T (55) 3000 6000
F (55) 3000 6091

GUADALAJARA, JAL.
FRANCISCO JAVIER GAMBOA
NO. 388 INT. 203 COL. ARCO SUR
C.P. 44150
T (33) 3616 7272, 3616 7364
F (33) 3616 7272, 3616 7364

CÓRDOBA, VER.
KM 10 CARRETERA FEDERAL
COL. VENTA PARADA AMATLÁN
DE LOS REYES
C.P. 94946
T (271) 716 6595